

# PG&E demand response



## highlights

- **Earn monthly payments** just for being on standby to perform
- **Annual bonus** for meeting 90% of your reduction potential
- **Bundled customers get paid a premium rate** for all kWh reduced
- **3X premium payment** for all kWh reduced above commitment
- **Call hours** are between 11 AM and 6 PM on non-holiday weekends from May to October
- **No risks, no penalties, no out-of-pocket costs**
- **You are in control...** the more power you reduce, the more you earn

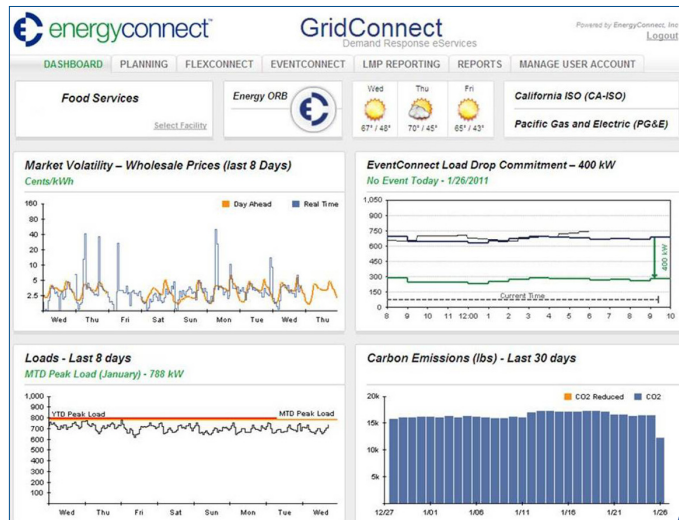
## Get Rewarded for Good Energy Management

Can you reduce your energy consumption for just a few hours at a time to help your utility manage peak demand? The rewards are significant. Moreover, as an active participant in the smart grid, you help enhance its reliability and contribute to the revolution making California the leader in energy management.

EnergyConnect facilitates the cash flow for your participation and provides the technical support to enroll your facility, develop effective curtailment strategies, and optimize the overall experience for your organization.

To qualify, your facility must be:

- In the PG&E service area (direct access OK)
- Able to shift or reduce a portion of your load for a few hours



*The GridConnect™ dashboard provides clear visibility of grid status, event monitoring and performance tracking, allowing you to maximize your participation and earnings potential.*

Call  
408.370.3311  
to  
Enroll Today!



## How Much Can You Earn?

You control your payments depending on how much you are willing to reduce and how well you perform (see table). By reviewing your power consumption and operational flexibility, we can more clearly define your levels of compensation.

Committed Energy Reduction	Annual Payment Range
250 kW	\$12,000 – \$17,000
500 kW	\$24,000 – \$34,000
1000 kW	\$48,000 – \$67,000
2000 kW	\$96,000 – \$134,000

### Notification Options

Facilities are notified at least two (2) hours prior to the event. Notifications are sent via e-mail, pager, and telephone message.

### Features to Enhance Participation

- Optional real-time metering for event monitoring and analysis
- Optional direct interface to automated controls

## What Kinds of Loads Qualify?

Any load that can be reduced at least 100 kW is eligible. Examples of reduction strategies include:

- Air-conditioning and chillers
- Heavy machinery
- Electric furnaces and heaters
- Industrial air handling
- Plug loads
- Battery chargers
- Agricultural and municipal pumping
- Industrial freezers or warehouse cooling
- Mineral and mining equipment
- Water treatment and aeration
- Metal forming and shaping processes
- Lighting and non-critical loads of any kind

## Participation FAQs

### What if I can't participate when I am called?

Reliable participation is critical to this program. We help you develop a curtailment strategy that ensures minimal impact on business operations, worker safety and comfort. We understand business needs evolve; we can adapt your curtailment plan to acceptable levels. Participants get paid for every kW reduced.

### Is this a PG&E program?

The program is provided through a direct contract with PG&E and is approved and monitored by the California Public Utilities Commission. The program is an alternative to the default Peak Day Pricing (PDP) tariff for commercial/industrial customers. Customers registering in the program are exempt from the high rate structure imposed during PDP events.

### How do I get started?

Getting started is easy. Call us at 408.370.3311 and we will help you understand the program, its parameters, and how it supports your financial and sustainability goals. A simple enrollment agreement with no risk ensures you have the flexibility to participate on your terms and provides the opportunities to adjust participation level if needed.

## Fund Your Energy Future...AND Make a Difference!

Beyond enhanced energy management and cost savings, your participation in demand response using GridConnect delivers many added benefits: **+** Decreases the need for new power generation **+** Makes environmental stewardship profitable **+** Prevents rolling blackouts and brownouts **+** Improves the reliability and efficiency of the electrical grid **+** Reduces your carbon footprint.



408.370.3311  
[www.energyconnectinc.com](http://www.energyconnectinc.com)  
[info@energyconnectinc.com](mailto:info@energyconnectinc.com)

get control. get **energyconnected**.™